

MONTHLY MEMBERSHIP PROGRESS REPORT

District 322C3

Results as of: 10/31/2023

GMT:

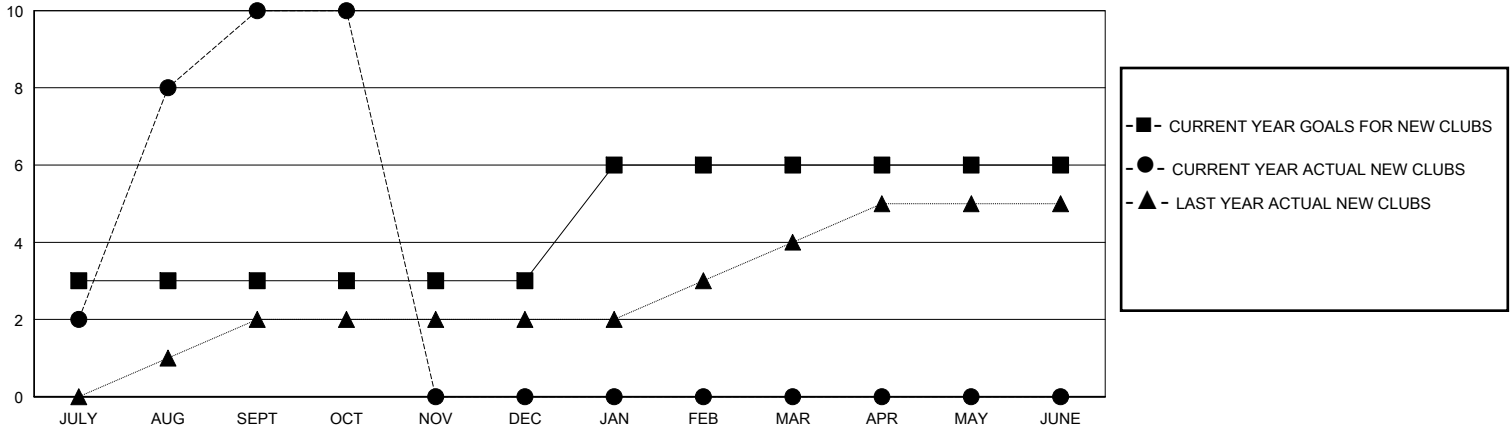
LOCATION INDIA

GMT CA

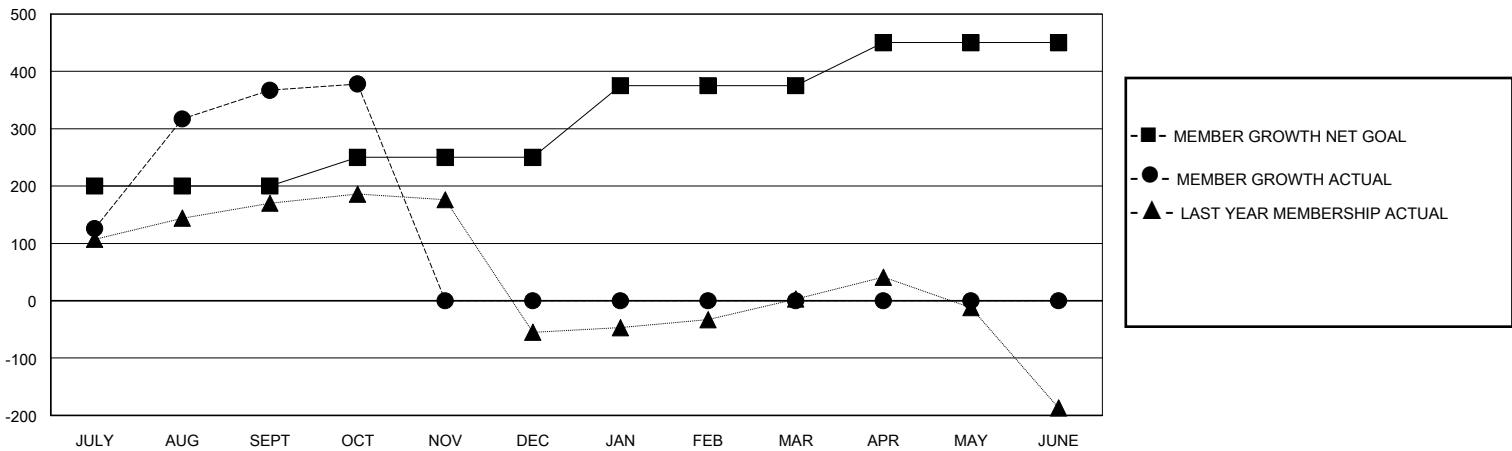
Clubs			
RESULTS FOR 2023-2024			
QUARTER	NEW CLUB GOAL	NEW CLUBS	DROPPED CLUBS
JULY/AUG/SEPT	3	10	2
OCT/NOV/DEC	0	0	0
JAN/FEB/MAR	3	0	0
APR/MAY/JUNE	0	0	0

Members			
RESULTS FOR 2023-2024			
QUARTER	MEMBER GROWTH NET GOAL	MEMBER GROWTH ACTUAL	DROPPED MEMBERS ACTUAL (including transfers)
JULY/AUG/SEPT	200	465	83
OCT/NOV/DEC	50	28	14
JAN/FEB/MAR	125	0	0
APR/MAY/JUNE	75	0	0

GOALS AND ACTUAL NEW CLUBS CUMULATIVE



GOALS AND ACTUAL MEMBERS CUMULATIVE



DROPPED CLUBS: 2

58 CLUBS OF 98 ADDED 1 OR MORE NEW MEMBERS

GENDER DISTRIBUTION

MALE 2,599 (73.90%)
FEMALE 918 (26.10%)

DROPPED MEMBERS

[CLICK HERE FOR CUMULATIVE MEMBERSHIP DATA](#)

DECEASED	4
CLUB CANCELLED	7
OTHER	86
TOTAL	97

TOTAL FAMILY UNIT MEMBERS	2,150
FAMILY MEMBERS PAYING HALF DUES	1,380